

# JOHNS HOPKINS MEDICAL IMAGING

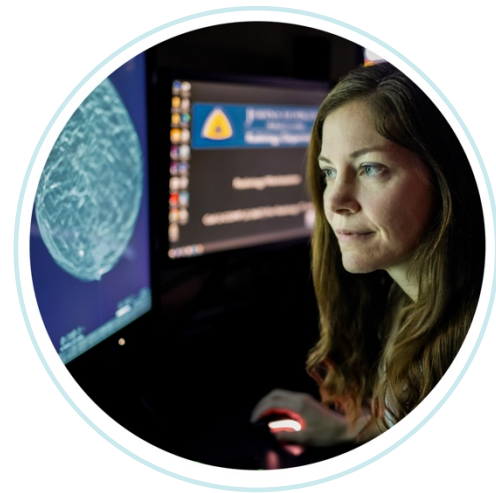
## Now Utilizing AI Software for Mammograms

Johns Hopkins Medical Imaging locations will now be utilizing AI software to assist our subspecialized breast imaging radiologists with mammography exams. All mammography exams from any Johns Hopkins will continue to be read and reported by our board-certified radiologists, the software will be serving as a secondary tool to help early detection of breast cancer and minimize recall rates.

### Background

As part of Johns Hopkins dedication to staying on the cutting edge of healthcare, our breast imaging radiologists have been closely reviewing FDA-cleared AI software for 2D and 3D screening mammograms.

We have determined that by utilizing this software as a secondary tool, patients may benefit from increased accuracy, quicker results, and lower recall rates. This software is designed to work concurrently with radiologists and not as a standalone option. Johns Hopkins has already been using computer-aided detection software as that is an industry standard, this AI software is a more advanced option to allow us to continue providing high-quality patient care.



### Patient Changes

Patients will not be charged any additional fees for this secondary level of review.

Their reports and image results will continue to be available on MyChart.

## Clear Results, Compassionate Care

### Bethesda

6420 Rockledge Drive  
Suite 3100  
Bethesda, MD 20817

### Columbia

11055 Little Patuxent  
Parkway Suite L9  
Columbia, MD 21044

### Green Spring Station

10803 Falls Road  
Suite 1100  
Lutherville, MD 21093

### White Marsh

4924 Campbell Blvd.  
Suite 105  
Nottingham, MD 21236

### Schedule an exam

by calling 443-997-7237 or online at [hopkinsmedicine.org/imaging/mychart](https://hopkinsmedicine.org/imaging/mychart)



JOHNS HOPKINS  
MEDICINE